

CHICAGO- YOUR KIND OF TOWN

On behalf of The Chicago Metal Arts Guild, we welcome you to the 35th SNAG conference. We hope you enjoy your stay in Chicago, (a.k.a.) The Windy City, The City of Big Shoulders and...the birthplace of SNAG!

We are excited and proud to be hosting the SNAG Conference in Chicago. This conference is all about the creative process – Mind and Matter: from thought to object. It's something we all have in common, but everyone's approach and path is slightly different.

Creating this conference has certainly been a long journey. From deciding to host it, to brainstorming for themes, discussing choices of speakers, finding galleries to host shows, and gathering volunteers – it's finally culminating into an actual conference! We have a great lineup of national and international speakers, many of whom will discuss how they get from initial ideas to final realizations.

We would like to thank all those who have worked so hard to make this conference happen. Without their hard work, suggestions, support and big ears, none of this would have been possible. A special thanks to friends and family for their understanding, advice, and listening to all the conference chatter the last few years. Most of all, a huge thanks to Kristin, Melissa, Peggy and Dana for their support, patience and all that they've done to help make the planning go as smoothly as possible.

Last, but certainly not least, we hope you'll take advantage of some of the great things our fabulous city has to offer:

- World class museums
- Millennium Park and the lakefront
- The Magnificent Mile, shopping and restaurants
- Navy Pier and fireworks
- A city walking or boat tour of our world-renowned architecture
- Stuffed pizza, Italian beef sandwiches, and the Garrett's cheddar/caramel corn mix

When you hit the town, don't forget your map and restaurant guide, located in your conference tote bag.

Best wishes for a fun and creative weekend,

- *Alix Mikesell & Pam Robinson*

Mind & Matter: From Thought to Object

CONFERENCE SCHEDULE

May 24-27, 2006

Please see descriptions of events and programs starting on page 6 for details.

WEDNESDAY, MAY 24

12:00-7:00	Registration	<i>Registration Office</i>
12:00-5:00	Vendor Room Open	<i>Grand Ballroom: Salon III</i>
	SNAG Auction	<i>Grand Ballroom: Salon III</i>
	RECEIVING DONATIONS ONLY (No Bidding)	
1:00-5:00	Professional Development Seminar	<i>Grand Ballroom: Salon I</i>
	<i>(free, pre-conference event - see page 16 for details)</i>	
6:00-8:00	Pendant Swap	<i>Chicago Ballroom (5th Floor)</i>
	DINNER ON OWN	
8:30PM-???	Student Mixer	<i>Hard Rock Cafe</i>
	<i>(Located within walking distance of the hotel - see page 18 for details)</i>	

THURSDAY, MAY 25

8:00-5:00	Registration	<i>Registration Office</i>
8:30-5:00	Vendor Room Open	<i>Grand Ballroom: Salon III</i>
	SNAG Auction - Open for Bidding	<i>Grand Ballroom: Salon III</i>
8:00-8:30	SNAG Voting	<i>7th Floor Lobby</i>
9:00-9:15	General Welcome	<i>Grand Ballroom: Salon I&II</i>
	First Timers' Welcome	
	Introduction of the Hosts/Conference Preview	
9:15-10:00	Keynote: Ted Noten	<i>Grand Ballroom: Salon I&II</i>
	<i>"Once a Bricklayer, Always a Bricklayer"</i>	
10:00-10:45	Ramon Puig Cuyàs	<i>Grand Ballroom: Salon I&II</i>
	<i>"The Magnitude of Small Dimension: A Personal Voyage Between Macrocossms and Microcossms"</i>	
10:45-11:15	Coffee Break	<i>7th Floor Lobby</i>
	Portfolio Review On-site Sign-up	<i>7th Floor Lobby</i>
	SNAG Voting	<i>7th Floor Lobby</i>
11:15-12:00	Martha Ehrlich	<i>Grand Ballroom: Salon I&II</i>
	<i>"Akan Cast & Repoussé Metalwork"</i>	
	3M Solutions, Bench Demonstrations & Tips	<i>7th Floor Lobby</i>
12:00-1:00	LUNCH ON OWN	
1:00-1:45	Jean Mandeberg	<i>Grand Ballroom: Salon I&II</i>
	<i>"The Importance of PLAY in Transforming Mind into Matter"</i>	
1:45-2:15	Annual Membership Meeting	<i>Grand Ballroom: Salon I&II</i>
2:15-3:00	Frank Wilson	<i>Grand Ballroom: Salon I&II</i>
	<i>"Hand, Brain, and Self: How (and Why) Nature Learned to Make Artists"</i>	
	3M Solutions, Bench Demonstrations & Tips	<i>7th Floor Lobby</i>

THURSDAY, MAY 25, continued

- 3:00-4:00 SNAG Voting *7th Floor Lobby*
- 3:00-5:00 Connections Room *Chicago Ballroom (5th Floor)*
Educators' Room *(See pages 18-19 for details)*
Portfolio Reviews
- Book Signings *(see page 20 for details)* *Vendor Room*
- 5:00-7:00 Reception for Kiff Slemmons Exhibition at the Chicago Cultural Center
(this is a separate event, located at the Chicago Cultural Center)
DINNER ON OWN

FRIDAY, MAY 26

- 8:00-4:00 Registration *Registration Office*
- 8:30-4:00 Vendor Room Open *Grand Ballroom: Salon III*
SNAG Auction - Open for Bidding *Grand Ballroom: Salon III*
- 8:30-10:00 Vendor Room Breakfast Reception *Grand Ballroom: Salon III*
SNAG Voting *7th Floor Lobby*
- 9:00-9:45 3M Solutions, Bench Demonstrations & Tips *7th Floor Lobby*
- 10:00-10:45 Karl Fritsch *Grand Ballroom: Salon I&II*
*"Observations on Conventional Jewelry in the Context of
His Own Work"*
- 10:45-11:30 Sharon Church *Grand Ballroom: Salon I&II*
"Working Toward the Center"
- 3M Solutions, Bench Demonstrations & Tips *7th Floor Lobby*
- 11:30-12:00 Lifetime Achievement Award *Grand Ballroom: Salon I&II*
Presentation - Recipient: Kurt Matzdorf
- 12:00-1:15 LUNCH ON OWN
- 12:00-12:15 SNAG Voting *7th Floor Lobby*
- 1:00-1:15 SNAG Voting *7th Floor Lobby*
- 1:15-2:00 Kate Bonansinga *Grand Ballroom: Salon I&II*
"The Big Picture and the Small Object"
- 2:00-2:45 Terry Sisco *Grand Ballroom: Salon I&II*
"Ten Things Every Retail Buyer Wants to Know"
3M Solutions, Bench Demonstrations & Tips *7th Floor Lobby*
- 2:00-5:00 Education Dialogue *Chicago Ballroom (5th Floor)*
- 2:45-3:00 SNAG Voting *7th Floor Lobby*
- 3:00-4:30 **NEW!** Open Spaces *Chicago Ballroom - A,B,C & F,G,H (5th Floor)*
(see page20 for details)
- 5:00-9:30 Gallery Bus Tour
(rotating buses - see brochure in conference tote bag for details)
DINNER ON OWN

SATURDAY, MAY 27

8:00-12:30	Registration	<i>Registration Office</i>
8:30-3:30	Vendor Room Open	<i>Grand Ballroom: Salon III</i>
8:30-11:00	SNAG Auction	<i>Grand Ballroom: Salon III</i>
	FINAL HOURS TO BID!	
9:00-9:45	Bruce Pepich	<i>Grand Ballroom: Salon I&II</i>
	<i>"What's in a Name?"</i>	
	3M Solutions, Bench Demonstrations & Tips	<i>7th Floor Lobby</i>
9:45	Hotel Room Drawing	<i>Grand Ballroom: Salon I&II</i>
9:45-10:30	Tina Rath	<i>Grand Ballroom: Salon I&II</i>
	<i>"Razors Edge"</i>	
10:30-11:15	Coffee Break	<i>7th Floor Lobby</i>
10:45	RAFFLE DRAWING	<i>Auction Site</i>
11:00	SNAG AUCTION CLOSES!	<i>Grand Ballroom: Salon III</i>
11:15-12:00	Hoss Haley	<i>Grand Ballroom: Salon I&II</i>
	<i>"Imprint: Fixed Images and Lasting Ideas"</i>	
	3M Solutions, Bench Demonstrations & Tips	<i>7th Floor Lobby</i>
12:00-1:30	LUNCH ON OWN	
1:00-3:30	SNAG Auction - Winning Bidder Pickup	<i>Grand Ballroom: Salon III</i>
1:30-2:30	Annual Membership Meeting	<i>Grand Ballroom: Salon I&II</i>
2:30-3:00	Conversation with the Board	<i>Grand Ballroom: Salon I&II</i>
3:00-3:15	Break	
3:15-4:00	Annual Juried Student Slide Show	<i>Grand Ballroom: Salon I&II</i>
	<i>"In Flux"</i>	
7:00-7:30	Cocktails (Cash Bar)/Food	<i>5th Floor Lobby Bar</i>
7:30-9:00	Final Night "Speakeasy" Party	<i>Chicago Ballroom</i>
	Buffet	
	Conference Closing Words	
	Passing of the Torch	
9:00-12:00	Dancing with the Chicago Catz	<i>Chicago Ballroom</i>

Hosted By



The 2006 SNAG Conference
is Generously Supported By:



**Anonymous
Foundation**

Additional Sponsors:

Gold Level (\$2,000 - \$3,000)

Myron Toback (Conference Tote Bags)

Otto Frei Company & Bill Gangi Multisensory Arts (Final Night Party Dance Band)

Silver Level (\$1,000 - \$1,750)

Chicago Cultural Center (Kiff Slemmons Reception)

Facère Jewelry Art Gallery (Educators' Room)

KerrLab (National Student Exhibition)

Rio Grande (Conference Programs and Pocket Schedules)

United Precious Metal Refining, Inc. (Neck Wallets)

Pewter Level (\$500 - \$950)

Aaron Faber Gallery (Student Slide Show Presentation)

King's Ransom (Speaker: Frank Wilson)

Mobilia Gallery (Speaker: Karl Fritsch)

Tim Roark Imports (Gallery Night Tour Bus)



KEYNOTE: Ted Noten

“Once a Bricklayer, Always a Bricklayer”

The recurrent, underlying theme of Ted Noten’s work is the challenge of convention and processes of habituation: the familiar and the unusual. By lifting symbols from their everyday surroundings and placing them in a new context, he doesn’t so much query the symbol itself as our perception of it. No matter what the medium, his approach is that of a jeweler - a craftsman. Noten will illustrate his themes and walk through his own career by showing the shifts that developed his way of working.

Ted Noten started his career as a bricklayer, later travelling to India and Africa where he met a German man who sold jewelry on a blue velvet sheet in the streets of Athens. This man became Noten’s first master. Noten attended the Gerrit Rietveld Academy in Amsterdam where he graduated in 1990. Since then he runs his own studio in Amsterdam. His work is in the collections of various international museums and private collectors. Noten is an instructor at The Design Academy in Eindhoven, a fellow researcher at the UCE in Birmingham and free lance teacher at the Sandberginstitute in Amsterdam.

Artist: Almeida



Kate Bonansinga

"The Big Picture and the Small Object"

How does a West Texas gallery side step cowboy art without making a knee-jerk retreat to the safety of the avant-garde? The Stanlee and Gerald Ruben Center for the Visual Arts places exhibitions of art jewelry, ceramic sculpture and graphic design on equal footing with those of paintings, sculpture, and new media. This presentation will touch upon strategies for the exhibition and consideration of jewelry in a fine art context. It also offers a behind-the-scenes look at the traveling exhibition, *Hanging in Balance: 42 Contemporary Necklaces*.

Kate Bonansinga is the Director of the Stanlee and Gerald Ruben Center for the Visual Arts and Assistant Professor of Art at the University of Texas at El Paso. She serves on the editorial advisory board for Artllies Magazine, Houston, TX and as a national art peer for the Office of the Chief Architect of the United States. She earned an M.A. in art history, with a focus on the art of Asia, from the University of Illinois, Urbana-Champaign.

Sharon Church

"Working Toward the Center"

Sharon Church's carved jewelry forms reference the lush beauty of the animate world. Working directly in natural materials - wood, leather and bone - she makes jewelry that evokes feelings of loss, longing and love. How do divergent interests in icons, frogs and foliate imagery contribute to this endeavor? What comprises an artist's search? In this lecture, Church examines her own cycles of making, revealing rhythms that imply a core and define an evolving studio practice.



Most of Sharon's time is devoted to teaching. She is a Professor of Crafts at The University of the Arts and recipient of The Lindback Distinguished Teaching Award. She is also a mother, wife, artist and occasional gardener, with one dog, two cats and a frog. She graduated from Skidmore College and holds an MFA from Rochester Institute of Technology. In 1978 she received an N.E.A. Grant. More recently, a significant exhibition of her jewelry was held at The John Michael Kohler Arts Center, and her piece "Shimmer" is in the current Australian show, Transformations.



Ramon Puig Cuyàs

"The Magnitude of Small Dimension: A Personal Voyage Between Macrocosms and Microcosms"

Translator: Elizabeth Shypertt

The magnitude of small dimensions expresses the idea that small objects, like jewelry, can contain big worlds and universes. With jewelry, Ramon Puig Cuyàs discovers, imagines, invents and transforms other universes, which emerge from the depths of his dreams and desires.

The best way we have to deal with the unknown, the inexplicable and indefinable is the metaphor. For this presentation, Cuyàs selected four of the most recurrent metaphors used in his work; The Constellations, The Archipelagos, The Cardinal Marks and Walled Gardens.

Ramon Puig Cuyàs is Head of the Jewelry Department at the Massana School of Art and Design, in Barcelona. His work is in many public and private collections, and since 1974 exhibited in galleries throughout Europe, Japan, Canada and United States.

Martha Ehrlich

"Akan Cast & Repoussé Metalwork"

Prestige metalwork of the Akan-speaking peoples of Ghana and Ivory Coast has been Martha Ehrlich's primary interest for over thirty years. Abundant local deposits of alluvial gold traded to the Muslim African North and to the Europeans at the coast for the past five centuries fostered growth of the powerful states in Ghana, culminating with the Asante Empire, which still exists as a coherent ethnic force. Other Akan-speaking Ghanaian peoples, notably the Fante, the Ivory Coast Baule and Lagoons Akan use gold, imported silver or brass in ornaments and the arts to illustrate oral traditions reinforcing social order. This presentation will focus on manufacturing techniques and social messages of the metal arts.



Martha Ehrlich is Associate Professor of Art History at Southern Illinois University, Edwardsville. She received her Ph.D. in Art History from Indiana University, Bloomington, has done field research in Great Britain and Ghana, and taught African and related areas of Art History in many colleges and universities over the past forty years.



Karl Fritsch

“Observations on Conventional Jewelry in the Context of His Own Work”

Presentation Sponsored by Mobilia Gallery

This talk is like a jewelry diary, moving from place to place and from piece to piece. From his childhood in the German mountains of the Allgäu, to his apprenticeship in Pforzheim, through travels to America, Asia, Australia and Europe, Karl Fritsch realized that commercial jewelry looks about the same all over the world. In 1993 he started to use conventional jewelry as the basic material in his work. The latest works go one step further, with pieces that initially have a “not” designed quality - clumsy, sluggish and thick. But the metal appears mystical, as if the nature of the material has created this indefinite shape itself. A position is built challenging the compulsion to design and also the conventions of commercial and craft jewelry.

Karl Fritsch lives and works in Munich. Recent group shows include The Turnov Collection at the National Museum of Archaeology in Lisbon, Yellow Metals Stedelijk Museum, Amsterdam and Collect at the Victoria & Albert Museum, London.

Hoss Haley

“Imprint: Fixed Images and Lasting Ideas”

This presentation will document Hoss Haley’s twenty-five year journey of metal working from early sculpture commissions produced on the family farm in Kansas to present endeavors in the realm of public art. Slides of past and current work, visual references, and work by influential artists will follow his technical explorations in blacksmithing, machining, fabrication, and casting as well as his gradual evolution of conceptual themes and artistic objectives.



Hoss Haley is a studio artist living and working in Asheville, North Carolina. Primarily a sculptor, he has recently been delving into public art. His most recent solo exhibition of sculpture and paintings on steel was shown at Blue Spiral 1 Gallery (NC). His work has also been shown at the North Carolina Museum of Art, Southeastern Center for Contemporary Art, New Mexico Museum of Fine Arts, and John Elder Gallery. Haley has been a resident artist at Penland School of Crafts and at the John Michael Kohler Arts Center.

**Jean Mandeberg**

*“The Importance of PLAY
in Transforming Mind into Matter”*

How can contemporary metalsmiths find ways to both acknowledge and transcend their materials to make meaningful objects? Jean Mandeberg’s presentation will seriously explore the activity of PLAY for art’s sake. She will discuss the role of PLAY not only in her teaching fine metalworking, but also as a source of inspiration for her own work.

Jean Mandeberg is an artist, a member of the Visual and Environmental Art Faculty at The Evergreen State College (Olympia, Washington), and chair-elect of the Washington State Arts Commission. At the start of her career as a metalsmith, Jean hammered sheet metal into large vessel forms. She now hammers nails to wrap colorfully-printed, embossed tin over wooden forms. Obsessive patterns of upholstery tacks and layers of metal simultaneously reveal and conceal her imagery.

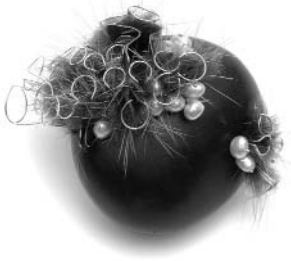
Bruce W. Pepich

“What’s in a Name?”

Quite a lot, if you have been following the national discussion on the use of the word “craft” by American arts institutions. This presentation will provide an update on discussions taking place in the field on terms such as “craft,” “design” and “fine art.” What are their similarities and differences and the significance they carry in different contexts? As artists move from one material to another in creating work, where does the historic significance of craftsmanship fit? While not solving the debate, this presentation will outline some of the current discussions in the field.



Bruce W. Pepich is Executive Director and Curator of Collections for the Racine Art Museum (RAM). In the 1990s he assembled one of the most significant contemporary craft collections in the nation at Wustum Museum of Fine Arts. He opened RAM in 2003 in downtown Racine as home to this collection. In addition, he maintains the museum’s original focus in works on paper, allowing him to feature exhibitions that combine craft media with works on paper.



Tina Rath
“Razors Edge”

From presentation to conscious provocative material choices, Rath’s work explores notions of power in the jewelry context. At first captivated by how an individual can use jewelry performatively, her recent work explores how materials themselves place demands on both the artist and the viewer.

Through seduction and the cultivation of desire, her newest body of work seeks not only to explore the mystery of the materials themselves by using and exploiting their ability to captivate, but also provokes questions of if and how one erases boundaries in the pursuit of beauty.

Tina Rath is the current Metals Program Chair and an Assistant Professor at the Maine College of Art in Portland, Maine. She earned her graduate degree from the Sandberg Instituut in Amsterdam (2001) and her BFA from the Philadelphia College of Art (1990).

Terry Sisco

“Ten Things Every Retail Buyer Wants to Know”

“It’s beautiful, so why can’t I sell it?” In this fun and motivational session, participants will gain valuable insight from a buyer’s perspective concerning how to move their creations from the design room to a retail gallery. According to Terry Sisco, “Without someone to appreciate and purchase your work, all you really have is a hobby.” Learn the criteria retail buyers use in determining what goes into their store and what doesn’t.



As the founder of ExSellerate, Inc., Terry Sisco’s vision is to create “breath-taking experiences” in the retail space. He has held significant positions with major retail organizations such as Bloomingdale’s and Marshall Fields (formerly Dayton/Hudson/Marshall Fields) and is a respected member of the fine jewelry community. Today, ExSellerate develops selling strategies for many prestigious clients including Platinum Guild International.



Frank R. Wilson, M.D.

“Hand, Brain, and Self: How (and Why) Nature Learned to Make Artists”

Presentation Sponsored by King’s Ransom

If a pianist can be an artist, and so can a goldsmith, a painter, an actor, and maybe even a *hooker*, the term “artist” may just be another way of saying “human,” and “art” just “something people do.” The talk’s title does set the bar somewhat higher, implying that artists are people who use their hands skillfully and/or thoughtfully to enlarge or heighten the experience of living as a unique individual. If that were true we might wonder – as a genetic question – whether artistry is a mode of thought or action that contributes to the survival of *Homo sapiens*. As national educational concerns focus increasingly on science, mathematics, and computer literacy, this seems a good time to be asking that question.

Frank R. Wilson, M.D., is a neurologist and former medical director of the Health Program for Performing Artists at UCSF, and Adjunct Clinical Professor of Neurology at Stanford University. He is the author of The Hand: How Its Use Shapes the Brain, Language, and Human Culture, nominated for the Pulitzer Prize for nonfiction in 1998. Learn more about Dr. Wilson at www.handoc.com.

EDUCATION DIALOGUE

“Strategic Alliances”

(located in the Chicago Ballroom (5th Floor) - Salons D&E)

The 2006 Education Dialogue (formerly the Educators’ Dialogue) will address the issue of “Strategic Alliances” between students, academies, academic departments, professional practitioners, community organizations, and outside groups and institutions of various kinds. James Thurman, Rebecca Strzelec, Sim Luttin, Doug Bucci, Matthew Hollern, and Phil Carrizzi will present their experiences and recommendations as teachers and students looking outside of the metals/jewelry program and discipline for technological, intellectual, social, economic, and pedagogical support. The audience is encouraged to engage the panel; providing a comprehensive look at the various ways that students, teachers, and the field in general can grow from interdependent relationships with vibrant groups and individuals with whom we are not commonly allied.



Student: Reiterman

SNAG Annual Juried Student Slide Show - "In-Flux"

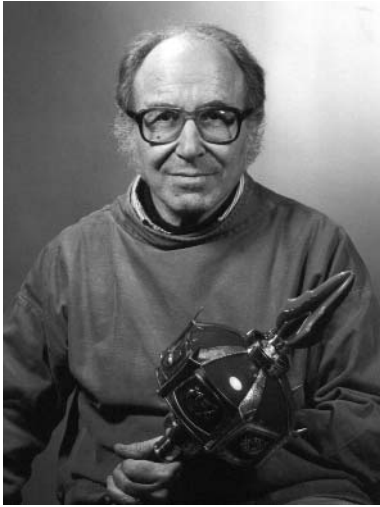
Presented by Phil Carrizzi

Presentation Sponsored by Aaron Faber Gallery

"In-Flux" is an audio-visual celebration of the context, research, ideation, and outcomes of the future leaders in our field. Jurors Tom Edwards and Alan Revere have selected images of student artists at work, their sketchbooks, renderings, prototypes, and final product on and off the body which feature an exemplary balance of process and execution. Jurors' Choice Award winners will be announced during this presentation.

Phil Carrizzi earned his MFA at the University of Washington in Seattle. He is currently the Chair of the Allesee Metals/Jewelry Design program at Kendall College of Art and Design in Grand Rapids, MI. His flatware set, Verge, was on the cover of the 2005 Exhibition in Print issue of Metalsmith Magazine.

Special thanks to Revere Academy and Kendall College of Art & Design for providing generous Jurors' Choice Award prizes.



2006 LIFETIME ACHIEVEMENT AWARD

Kurt Matzdorf

The Society of North American Goldsmiths is excited and honored to present the 2006 Lifetime Achievement Award to Kurt Matzdorf, Professor Emeritus of Gold and Silversmithing at the State University of New York, New Paltz. He is also one of the founding members of SNAG, present at

the very first meeting in 1968. This is the Society's highest award and recognizes a lifetime of exceptional service to the metalsmithing community.

Kurt Matzdorf's record of accomplishment as a teacher, maker and mentor is virtually unparalleled. For more than 75 years, he has been making art, and for over 50 years, that art has been in our community. A survivor of Nazi Germany, he ties art and life in everything he does. His work celebrates life's rituals and triumphs.

His development of the metals program at New Paltz led it to new levels of professionalism and success. His students have gone on to become today's leaders in our field.

The record of Professor Matzdorf's personal accomplishments could run on for pages. His ceremonial work is known in both academic and liturgical circles throughout the world. He is exhibited in major public museums on both sides of the Atlantic, including the Victoria and Albert Museum and the Jewish Museum, Berlin.

SNAG established the Honorary Membership Award to honor individuals who have made lasting and significant contributions to the field of contemporary metalsmithing. This award was renamed the Lifetime Achievement Award in June 2005 by vote of the membership. The Lifetime Achievement Award Committee, appointed by the Board of Directors, selects the recipients of this prestigious award from nominations submitted by the SNAG membership.

3M SOLUTIONS, BENCH DEMONSTRATIONS AND TIPS

(3M Presentations will be held in the 7th Floor Lobby near the elevators)



3M is proud to be a sponsor of the 2006 SNAG Conference, "Mind & Matter: From Thought to Object." During this year's conference, daily 3M Solutions demonstrations are scheduled and individuals are encouraged to bring their own work pieces to try products and seek advice. Several focus products will be presented including our award-winning 3M™ FX Polishing Wheels, Trizact™ products, respirators, and more. We will be demonstrating several applications such as gold, silver, precious metal clay, titanium, brass and more. The featured new product this year is our 3M™ Diamond Microfinishing Film for enamel, glass, metal and other substrate applications.

Each 3M Solutions Presentation will include:

- Live Demonstrations - New Product Introduction, Product Suggestions
- Tips Segment - Reducing Polishing Steps
- 3M Solutions Website information
- Drawing for a unique 3M product(s) (one winner per session)

3M Solutions, Bench Demonstrations and Tips Schedule:

Thursday, May 25

11:15 AM - 12:00 PM

2:15 - 3:00 PM

Friday, May 26

9:00 - 9:45 AM

10:45 - 11:30 AM

2:00 - 2:45 PM

Saturday, May 27

9:00 - 9:45 AM

11:15 AM - 12:00 PM

PRE-CONFERENCE EVENT:

Wednesday, May 24

PROFESSIONAL DEVELOPMENT SEMINAR

1:00-5:00PM

Grand Ballroom: Salon I

The Professional Development Seminar provides information on establishing and maintaining a career as a professional studio jeweler or metalsmith. It is designed to serve students, emerging artists and established professionals.

◆ **Using Your Skills to Pay the Bills**

Deb Karash will discuss the issues an artist must consider in deciding to forgo consignment and earn a living in the wholesale/retail craft show market.

◆ **How to Be a Working (Not a Starving) Artist in the Marketplace**

Biba Schutz and **Terri Logan** examine and discuss the market for well designed jewelry and metal objects.

◆ **Professional Guidelines**

Harriete Estel Berman will review existing documents and introduce new topics designed to inform artists about consignment contracts, juried shows and more.

◆ **Bound to Impress: Producing a Professional Artist's Catalogue**

Dennis Nahabetian explores the new, affordable and accessible options in self-publication.

◆ **Website Marketing**

Doug Bucci will discuss the elements that make a successful website.

The 2006 Professional Development Seminar is organized and moderated by Harriete Berman, Don Friedlich and Andy Cooperman. This program is FREE and open to the public. No conference registration is required. Come for all or part of the seminar.

***NEW* SNAG Student Conference Scholarships**

This year, Barbara Heinrich enthusiastically directed a campaign to bring as many college students as possible to the SNAG conference in Chicago. With college tuition at its peak, out of town seminars, events, and conferences can be difficult for a student to afford. This campaign endeavors to provide the same valuable experience to students that professional metalsmiths enjoy by attending the annual SNAG Conference. Here, they can learn practical business skills, build relationships with suppliers and galleries, and see metals history in the making. Through Heinrich's fundraising efforts, the registration fees for 30 students from across the country have been paid.

The project began months ago with an effort to raise funds from donors across the US. The response was overwhelming, and donations poured in from all corners of the metalsmithing world; suppliers, artists, galleries, collectors and educators participated in this charitable project. These "scholarships" were distributed to outstanding students from a list of schools compiled by Heinrich in recognition of their hard work and achievements.

The generosity of the donors is heartwarming and we thank them for making this opportunity possible.

2006 SNAG Student Conference Scholarship Donors

3rd Ward Jewelry
Alexander Primak Jewelry
Barbara Heinrich Studio
Billanti Casting
Jane Bohan
Carol Saunders Gallery
Namu Cho
Carol Fugmann
Michael Good
Heart & Company
John Iversen
Wendy Jachman
Mark Patterson

Pistachios
Alan Revere
Tim Roark
Susan Sadler
Satco Casting
Sea Hunt
George Sawyer
Star Diamonds
Jerry Szor
The Signature Shop
David Urso
Todd Wolleman
Len Zwass (Ins. Mkt. Place)

CONNECTIONS ROOM

Thursday, May 25

3:00-5:00PM

The **Connections Room** provides a forum to help students, educators, emerging artists, and art professionals make Connections. The Connections Room includes two separate events - **Portfolio Reviews** & the **Educators Room**. See details on each event below.

Portfolio Reviews

Chicago Ballroom - Salons A,B,&C

(Separate registration is required for this event - Check-in at 5th Floor Lobby)

Portfolio Reviews are for emerging artists and graduating students. Gallery representatives, curators, and other professionals in the metals field will be available by appointment to review portfolios and provide professional advice and guidance. The goal is to create an opportunity for emerging artists to meet and hear from seasoned artists and arts professionals that can help them in the development and advancement of their artistic careers. All participants must register for a review. Artists who have not pre-registered by email can register for remaining slots in-person Thursday, May 25 from 10:45 -11:15AM in the 7th Floor Lobby.

Portfolio Reviewers at print time include:

Harriete Estel Berman, *Metalsmith, Author of Professional Guidelines (CA)*

Andy Cooperman, *Jeweler/Metalsmith (WA)*

Darlys Ewoldt, *Artist/Adjunct Faculty, Columbia College (IL)*

Caroline Gore, *Artist/Assistant Professor of Art, Western Michigan University (MI)*

Karen Lorene, *Facère Jewelry Art Gallery (WA)*

Tim McCreight, *Teacher/Author (ME)*

Dennis Nahabetian, *Professional Studio Artist (NY)*

Scott Patria, *Function + Art Gallery (IL)*

Chris Ramsay, *Professor, Metals and Jewelry, Oklahoma State University (OK)*

Biba Schutz, *Studio Jeweler (NY)*

Peter Vale, *Vale Craft Gallery (IL)*

David & Roberta Williamson, *Artists/Jewelers/Educators (OH)*

Educators Room

Chicago Ballroom - Salons D&E

Sponsored by Facère Jewelry Art Gallery

Educators from universities, colleges, schools, art centers, and other educational programs across the United States will be included in the Educators Room. Educational programs will have representatives present to show slides of student work, answer questions, and have printed information on hand. This is a perfect opportunity for artists and students to learn about the educational possibilities available to them, and to meet faculty and current students. This is also an opportunity for educators to gather information for their students who are unable to attend the conference. Artists and students do not have to register separately to attend the Educators Room.

Participating Educators at print time include:
(more names of educators may be added by the time of the conference)

Bowling Green University (OH)
California College of the Arts (CA)
Colorado State University (CO)
Edinboro University of Pennsylvania (PA)
Haystack Mountain School of Crafts (ME)
Indiana University (IN)
Miami University (FL)
Pratt Institute of Art (NY)
Savannah College of Art and Design (GA)
East Carolina University, School of Art and Design (NC)
Southern Illinois University (IL)
State University of New York at New Paltz (NY)
Syracuse University (NY)
Texas Tech (TX)
Tyler School of Art/ Temple University (PA)
University of the Arts (PA)
University of Illinois at Urbana-Champaign (IL)
University of Kansas (KS)
University of North Texas (TX)
University of Oregon (OR)
University of Wisconsin (WI)
Virginia Commonwealth University (VA)
Penn State (PA)
Cleveland Institute of Art (OH)
Institute of American Indian Arts (NM)
Mendocino Art Center (CA)
University of Washington (WA)
Hopkins Center for the Arts, Dartmouth College (NH)
San Diego State University (CA)

Pendant Swap Reception

6-8:00PM

Wednesday, May 24

Chicago Ballroom

We're trying something different for an icebreaker this year - a pendant swap. Trade pendants or beads with your fellow attendees; it's a great way to catch up with old friends and make new acquaintances! We'll supply the cord. Make sure you save one of your creations for the volunteer collecting them for the silent auction. Hors d'oeuvres and beverages will be served.

Student Mixer

8:30PM-Midnight

Wednesday, May 24

Hard Rock Cafe

(63 Ontario Street, Chicago, IL 60610 / 312-943-2252)

The student mixer is designed to help students connect with their peers early in the conference. Mingle with other students from all over the country and start talking about the things that are important to you! Admission to the Hard Rock Cafe is open to all ages, and anyone can attend. To get to the Hard Rock Cafe from the Marriott, Walk North on Michigan Ave (about two blocks) to Ontario. Left on Ontario for about 4 1/2 blocks and you will see Hard Rock on the south side of the street.

Book Signings

3-5:00PM

Thursday, May 25

Vendor Room

Have your books and show catalogues signed by the authors and artists in the Vendor Room. Presenter Dr. Frank R. Wilson will be on hand to sign his book, The Hand from 3-4:00PM, followed by Felieke van der Leest (Jewelry Fables), Fred Fenster & Eleanor Moty (Metalsmiths and Mentors), Michele Feder-Nadoff (Rhythm of Fire) and Thomas Mann (Storm Cycle) from 4-5:00PM. Books are available for purchase on-site from Charon Kransen.

Vendor Room Champagne Breakfast Reception

8:30-10:00AM

Friday, May 26

Grand Ballroom: Salon III

Join us for a champagne breakfast in the Vendor Room! The vendors will be open early this morning and are at your service with no other programming to distract you, so there's no better time to spend money on yourself. A light breakfast will be served, including coffee, tea and of course, champagne!

NEW! Open Spaces

3-4:30PM

Friday, May 26

Chicago Ballroom (5th Floor)

Salons A,B,C & F,G,H

Replacing our former Breakout Sessions and designed to be more organic and open-ended, Open Spaces provides a forum for various discussion groups - but now you decide the content! If there's a particular subject you'd like to address with a group of your peers who share your interest, this is your opportunity. Please sign up on the Open Spaces bulletin board near registration, where you can suggest a new topic or indicate your interest in attending a topic already proposed. The same sign-up sheets will direct you to the right part of the Chicago Ballroom for each topic.

NEW! Dine Around

Want to have dinner with someone, but don't know who? We have made dinner reservations at several area restaurants for Friday evening (after gallery night) for SNAG Conference attendees. If you are attending the conference on your own or would just like to meet new people this is for you! Restaurant details and sign up sheets are on the Dine Around bulletin board near registration. Space is limited so sign up early!

Final Night "Speakeasy" Party

7:30PM-Midnight

Saturday, May 27

Chicago Ballroom

Hey dolls and mugs, the Roaring Twenties are back! Dust off your fedoras and fluff those boas! Let us transport you to the time of the gangsters and the flappers. Cocktails (cash bar) start at 7:00PM in the 5th floor lobby bar. After some hooch and a buffet dinner, the fun begins w/ dancing to blues, jazz, and ultra cool music with the Chicago Catz. We gotch ya name on da list; don't miss dis party!

Annual Membership Meetings

Grand Ballroom: Salon I&II

1:45-2:15PM, Thursday, May 25

and

1:30-2:30PM, Saturday, May 27

Like the wonderful exhibit "Body Works," SNAG's Membership Meetings are where the internal workings of your organization are splayed out for your inspection and review. It's the time for you, the membership, to learn who the board members are and what they are doing for you. You will learn how your membership dollars are spent, and be able to voice your opinion on how you think they should be spent. You are welcome to participate: make suggestions, comments and criticisms in a public forum, with the governing board listening to you. Meeting agendas are in your tote bags, and the Board encourages you to attend these important meetings.

Conversation with the Board

2:30-3:00PM

Saturday, May 27

Grand Ballroom: Salon I&II

This smaller, informal meeting immediately follows the second session of the Annual Membership Meeting. It will be set up in a round table format, and is intended as a forum for the membership to further explore ideas. There will not be those scary microphones for those not inclined towards public speaking. It is more of an opportunity for brainstorming and feedback about SNAG programs or opportunities. Your opinions will be valued at this venue, too. Typically, it fleshes out the momentum from the general membership meeting, and gives you the chance to more deeply understand SNAG-related business.

SNAG Voting

7th Floor Lobby (see below for times)

Voting is easy and it is one way that all members can play a role in the shaping of SNAG, because every single member is eligible to vote. In this election SNAG's membership will choose SNAG's next president, two board members, and one Nominations and Elections Committee member. Candidates will be introduced during the first session of the Annual Membership Meeting. Results of the SNAG elections will be announced during the second session of the Annual Membership Meeting.

VOTING TIMES:

Thursday, May 25

8:00-8:30AM

10:45-11:15AM

3:00-4:00PM

Friday, May 26

8:30-10:00AM

12:00-12:15PM

1:00-1:15PM

2:45-3:00PM

SNAG SILENT AUCTION

*Located in the Vendor Room (Grand Ballroom: Salon III)
(See Auction Hours below)*

Help SNAG fulfill its educational mission by supporting the Silent Auction! Visit the Silent Auction booth in the Vendor Room and bid on some of the outstanding items that have been donated this year. We have jewelry, metalwork, tools, books, stones, and all kinds of other things related to the metalsmithing world. Be sure to look for this year's collection of pendants and beads from the Pendant Swap!

SNAG exists to promote and facilitate education. All proceeds from the SNAG Auction are divided equally between the SNAG Educational Endowment (scholarships for undergraduate and graduate students in metals programs) and Educational Programming (e.g. Workshop Grants, Audio/Visual Rental Service and Lecture Series).

So be sure to stop by to browse, and support SNAG's Educational Programming and Endowment by taking something home with you. See you at the auction!

The 2006 SNAG Auction Coordinators:
Sharon Massey & Melissa Manley

Making Donations:

The auction will not be open for bidding on Wednesday. Instead we will only be accepting donations on this day (from 12- 5PM), so if you waited until you arrived at the conference to donate your piece to the auction, Wednesday is the day to donate! Also, look for auction volunteers on Wednesday night at the Pendant Swap Reception. Talk to them if you want to donate one of your pendants or beads to be auctioned in a group. Last year, the collection of pins from the Pin Swap was one of our hottest items!

Getting a Bidder Number:

To bid on items in the Silent Auction, you must have a bidder number. If you checked off the "Please assign me a bidder number" box on your conference registration, you should have a bidder number on the back of your conference name tag. If you did not pre-register for a bidder number, you can get one at the auction booth in the Vendor Room or at the Bidder Registration Table in the 7th Floor Lobby on Wednesday or Thursday morning. You must have a credit card to get a bidder number, but you can pay for any items you win at the auction with cash, check or credit card.

Item Pick-Up:

All winning bids and unclaimed donations must be picked up on Saturday, May 27 between 1:00 and 3:30 PM - **NO EXCEPTIONS!**

Auction Hours:

Wednesday, May 24: 12-5:00PM	Bidder Registration/Receiving Donations NO BIDDING TODAY
Thursday, May 25: 8:30AM-5:00PM	Auction Open For Bidding
Friday, May 26: 8:30AM-4:00PM	Auction Open For Bidding
Saturday, May 27: 8:30-11:00AM	Final Hours to BID
11:00AM	AUCTION ENDS!!
1-3:30PM	Winning Bidder Pick Up

VENDOR ROOM*Grand Ballroom: Salon III*

Purchase tools, supplies, gemstones and books direct from these top vendors! Try out products and get answers to all your questions right from the source.

Vendor Room Hours

Wednesday, May 24	12:00PM - 5:00PM
Thursday, May 25	8:30AM - 5:00PM
Friday, May 26	8:30AM - 4:00PM
<i>(Vendor Room Breakfast Reception 8:30 - 10:00AM)</i>	
Saturday, May 27	8:30AM - 3:30PM

SNAG 2006 VENDOR PARTICIPATION*(at time of printing)*

Sponsors are indicated by shaded box.

Allcraft, 135 W. 29th Street, Suite 205, New York, NY 10001
 Phone: 212-279-7077 / Fax: 212-279-6888 / E-mail: allcrafttools@yahoo.com
 Contact: Tevel Herbstman
(Tools, Supplies and Books)

Bill Gangi Multisensory Arts, P.O. Box 64141, Tucson, AZ 85728-4141
 Phone: 520-577-7574 / E-mail: gangi@flash.net
 Contact: Bill Gangi
(Designer-Cut Gemstones, Beads, Lapidary Services)
 Co-Sponsor: *Final Night Party Dance Band*

Bluebird Gemstones, P.O. Box 12284, Portland, OR 97212
 Phone: 503-281-4101 / Fax: 503-232-8752 / E-mail: funhog@pacifier.com
 Contact: Karen Sinizer
(Loose Stones, Carvings, Pearls)

Charon Kransen Arts, 456 W. 25th Street, Suite 2, New York, NY 10001
 Phone: 212-627-5073 / Fax: 212-633-9026 / E-mail: chakran@earthlink.net
 Contact: Charon Kransen
(Books, Catalogs)

Downeast Trading Co., Inc., P.O. Box 349, Middlebury, VT 05753
 Phone: 802-388-6946 / Fax: 802-388-7242 / E-mail: downeast@sover.net
 Contact: Rick Winslow
(Gold Chains, Silver Chains, Platinum Chains, Chains and Neckwires of Titanium, Stainless Steel, Leather, Silk and Rubber, some Pearls and Beads)

DuftyWeis Opals, Inc., P.O. Box 246, Maysville, KY 41056
 Phone: 606-564-7500 / Fax: 606-934-0404 / E-mail: robyn@duftyweis.com
 Contact: Robyn Dufty
(Boulder Opal, Opal Beads, Opal Doublets, Mexican Opal, Black Opal, Light Opal)

Eugene McDevitt, P.O. Box 55, Safety Harbor, FL 34695

Phone: 727-742-5471 / E-mail: gene@koroit.com

Contact: Gene McDevitt

(Australian Boulder Opal from his mine in Koroit and other curious stones)

Finn & Reich Diamonds, LLC **Saturday only** 2 West 46th St., Suite 901,
New York, NY 10036

Phone: 800-392-7997 / E-Mail: gregg.finn@att.net

Contact: Gregg Finn

(Loose diamonds)

Gary Abbott Gemstones, 330 Brandenburgh Cir., Roswell, GA 30075

Phone: 770-594-0561 / Fax: 770-552-9186 / E-mail: cabbott@hotmail.com

Contact: Gary Abbott

(Gemstones, Designer Gemstones)

Jason Penn Designs, P.O. Box 507, Tijeras, NM 87059

Phone: 877-988-2737 / E-mail: thepenns@mac.com

Contact: Jason Penn

(Gemstones, Cabochons)

Jewelers Mutual Insurance Company, 24 Jewelers Park Drive, Neenah, WI
54957

Phone: 800-558-6411 / E-Mail: sihde@jminsure.com

Contact: Sheri Ihde

(Insurance Services)

King's Ransom, 3030 Bridgeway, Suite 209, Sausalito, CA 94965

Phone: 415-331-2650 / Fax: 415-331-9402 / E-mail: bettysue@pearlgoddess.com

Contact: Betty Sue King

(Finest Pearls, Chinese, FWP, Tahitian, SS, Akoya, Natural Diamond Rough & Stringing)

Lodin's Gems & Minerals, 8884 Rte 219, Brockway, PA 15824

Phone: 814-265-8887 / Fax: 814-265-8887 / E-mail: bernie@lodins.com

Contact: Bernie Pisarchick

(Loose Cut Stones, Cabs and Faceted)

Otto Frei Company, 119 Third Street, Oakland, CA 94607

Phone: 510-832-0355 / Fax: 510-834-6217 / E-mail: john@ottofrei.com

Contact: John Frei

(Tools for Metalsmiths)

Penny Nisenbaum G.G., P.O. Box 27501, San Francisco, CA 94127

Phone: 415-564-1843 / E-mail: penrocks@mindspring.com

Contact: Penny Nisenbaum

(Unusual Gemstones, Cabochons, Freshwater Strands and Loose)

Reactive Metals Studio, Inc., P.O. Box 890, Clarkdale, AZ 86324

Phone: 928-634-3434 / Fax: 928-634-6734 / E-mail:

michele@reactivemetals.com

Contact: Michele Bowers

(Niobium, Titanium, Japanese Alloys (Mokume-gane), Findings, Supporting Products)

(continued. . .)

(Vendor Room Participation, continued. . .)

Rio Grande, 7500 Bluewater Road NW, Albuquerque, NM 87121
 Phone: 505-839-3283 / Fax: 505-839-3248 / E-mail:
 marketing@tbg.riogrande.com
 Contact: Roberta McGrew
 (Hand Tools)

Tim Roark, Inc., 1401 Peachtree Street, Suite 234, Atlanta, GA 30309
 Phone: 404-872-8937 / Fax: 404-872-9346 / E-mail: trimports@aol.com
 Contact: Tim Roark
 (Loose Colored Gemstones)

White Cloud Co., P.O. Box 750220, Flushing, NY 11375
 Phone: 718-830-3866 / Fax: 718-830-3280 / E-mail: whitecloudco@hotmail.com
 Contact: Dinesh Jain
 (Handcrafted High Karat Gold Beads & Findings, Precious & Semi-Precious Beads)

Whitney Worldwide, 625 Hayward Ave. N, St. Paul, MN 55128
 Phone: 651-789-1556 / E-mail: mmckinnon@whitneyworld.com
 Contact: Michael McKinnon
 (Jewelry Equipment and Tools)

2006 SNAG - CHICAGO, ILLINOIS JCK - LAS VEGAS, NEVADA SJTA - ATLANTA, GEORGIA



KING'S RANSOM • 3030 BRIDGEWAY • SUITE 209 • SAUSALITO, CA 94965 • USA
 voice 415.331.2650 | fax 415.331.9402 | orders 877.331.2650 | BETTYSUE@PEARLGOODESS.COM | PEARLGOODESS.COM

EXHIBITIONS

An impressive selection of juried and curated exhibitions at local galleries will run concurrently with the 2006 SNAG Conference all around Chicago and surrounding areas. Not only do the exhibitions enhance the conference theme for attendees, but they create an unprecedented opportunity for the general public to view a wide range of metal arts.

All shows marked with an asterisk (*) are featured on the bus tour, from 5:00-9:30 on Friday night. For detailed information about the bus tour, please refer to the Gallery Night Bus Tour Brochure that is included in your conference tote bag.

*** Body:Internalized/Externalized with Yevgeniya Kaganovich, Yeonmi Kang, Natalya Pinchuk and Gary Schott**

An exhibition of recent jewelry and objects commenting on issues pertaining to the body/mind.

Exhibition Dates: May 5 - June 3, 2006

Reception: May 26, 5:00 – 7:00PM

I-Space

230 W. Superior, Chicago, IL 60610 / 312-587-9976 / www.ispace.uiuc.edu

(Take the CTA Brown/Purple Line to the Chicago stop, or take any of the Chicago Avenue buses to Franklin Street, Gallery is at the NE corner of Franklin and Superior)



Kivarkis

*** Coming into View**

A juried exhibition for emerging artists whose work demonstrates exciting promise, new energy to the field, innovation and a reverence for the field of jewelry through the exploration of new formats, materials and processes. 10 countries are represented in addition to the United States; the works of 12 artists were selected. The works of the artists selected for the exhibition are not intended to represent developments in contemporary jewelry but rather they are meant to be reflective of fresh perspectives, a new attitude in jewelry making,

the absolutely unconventional and provocative.

Jurors: Mary Hallam Pearse & Sakurako Shimizu

Reception: May 26, 5:00 – 9:30PM

(Also available to view on Saturday May 27th from 12 noon – 3:00PM)

Yann Woolley's Home

210 N. Morgan, Chicago, IL 60622

*** Golden Opportunity** (virtual exhibition)

Sponsored by Ethical Metalsmiths

Consider gold. It is a symbol of love, a measure of wealth and accessory to power. It is an element of nature infused with a history of desire. It is a timeless obsession, treasure and tradition, beauty and brand, investment and inspiration, material and myth. It is aura, allure and agent of catastrophe. Gold. Think about it.

Reception: May 26, 5:00 – 9:30PM

Exhibition Online: May 26 - November 26, 2006

Marx Saunders Gallery

230 W. Superior, Chicago, IL 60610 / 312-573-1400

(Brown line train to Chicago/Franklin stop)

*** Jerry Bleem**

This show is a sampling of Bleem's work in various media. Organic stapled sculpture, stamp collage, insect wings mounted on glass, crocheted wall work using flags, and drawings on found papers. These disparate approaches come together in Bleem's working method, a conjunction of the conceptual and the constructive process. Lines are the bones upon which Bleem hangs his investigations about life's meaning.

Exhibition Dates: May 26 - July 1, 2006

Reception: May 26, 5:00 – 9:00PM

Aron Packer Gallery

118 N. Peoria, Chicago, IL 60607 / 312-226-8984 / www.aronpacker.com

(#20 Madison bus west to Peoria, or #8 Halsted bus to Washington)

**Kiff Slemmons:
Re:pair and Imperfection**

Two years ago, Chicago jewelry artist Kiff Slemmons asked 18 of her colleagues to send her fragments of work from their benches that they considered to be imperfect, broken, or no longer interesting. For this exhibition, Slemmons "completed" these pieces, ultimately creating 28 finished works—brooches, pins, rings and necklaces. The project is less of a collaboration than it is an exploration of mutual respect and homage—and a concrete admission that all art is derivative and appropriative. The works are displayed in boxes and accompanied by photographs of the original fragments. This exhibition is supported by a grant from the Rotasa Foundation



Slemmons

Exhibition Dates: March 25 – May 28, 2006

Reception: May 25, 5-7:00PM

Reception Sponsored by: Art Clay World USA, Art Jewelry Magazine, the Chicago Metal Arts Guild, Cork Catering and Special Events, Lillstreet Art Center, Lark Books, Ornament Magazine and SEP Jewelry Tools.

Chicago Cultural Center

78 E. Washington, Chicago, IL 60602 / 312-744-8942

(From the Marriott: Walk 7 blocks South on Michigan Avenue)



Hallam

*** Mentalmetal**

Mentalmetal is an astounding array of jewelry, furniture, sculpture, and functional works in a variety of metals and techniques. In keeping with the Conference theme, each artist was asked to provide, in addition to the finished object, a record of the inspiration or process that preceded it. Examples include photographs, stories, sketches - even a diary entry from a relative. This adds a fascinating layer to the exhibition: investigations as to the *meaning* of objects; snapshots of inspiration & frustration; the artistic process laid bare.

Exhibition Dates: May 12 - June 30, 2006

Reception: May 26, 5:00 – 9:00PM

Function+Art

1046 W. Fulton Market, Chicago, IL 60607 / 312-243-2780 / www.functionart.com



Weintraub

Midwest Metals Artists Invitational

A group exhibition representing artists from the metals programs of Midwest universities and art schools.

Curated by Jane Weintraub

Exhibition Dates: April 10 - June 2, 2006

Reception: May 25, 6:00 - 9:00PM

(Parking is free to guests on the evening of the reception only in parking Lot F)

Fine Arts Center Gallery

Northeastern Illinois University

5500 N. St. Louis Ave., Chicago, IL 60625-4699 / 773-442-4918 / www.neiu.edu

* Modern Classicalists

The exploration into the world of today's finest jewelers; whose work is inspired by the traditions, techniques and materials of the past. The combination of sumptuous gold, precious stones and ancient techniques, allows these talented artisans to create treasures of today, reflecting classical elements, promising beauty for all time. A collection of high karat gold, granulation, repoussé, hand-woven chain, and ancient coins and intaglios incorporated in modern settings are a few examples of the artistry that will be on display from high karat gold artists including Whitney Abrams, Britt Anderson, James Barker, Cecelia Bauer, Claire Bersani, Ronda Coryell, Cornelia Goldsmith, Kent Raible and Renee Tricarico. Catalogue available May 12, 2006.



Bersani

Curated by Whitney Abrams.

Exhibition Dates: May 16 - June 17, 2006

Reception: May 26, 4:00 – 8:00PM

Whitney Abrams - Incredible Jewelers of Our Time

9 East Huron Street, Chicago, Illinois 60611 / 312-337-6687

www.whitneyabramsjewelry.com

(From the Marriott: Michigan Avenue North to Huron Street, Huron Street East Two Blocks)



Ramsay

* Object Lessons: Collecting, Display and Art Practice

Vintage teapots, tin can chairs, fortune telling cups and globes, paintings and other collectables inform, and often become the subject matter of artists' work. In this exhibition, Kathleen Browne, Steve Litchfield, Chris Ramsay and Billie Jean Theide present their personal collections with their sculpture.

Exhibition Dates: May 5 - June 3, 2006

Reception: May 26 5 – 7:00PM

I-Space

230 W. Superior, Chicago, IL 60610 / 312-587-9976 / www.ispace.uiuc.edu

(Take the CTA Brown/Purple Line to the Chicago stop, or take any of the Chicago Avenue buses to Franklin Street, Gallery is at the NE corner of Franklin and Superior)

E
X
H
I
B
I
T
I
O
N
S
29

Parameters of Preciousness

Does something have to be rare or costly to be precious? When something is beloved or dear, isn't it also precious? No other art form deals with preciousness like art jewelry. From materials to final product, it affects how the art looks, feels, and sells. What happened when artists who traditionally negotiate 'preciousness' challenge its essence? This show is the result of that exploration.

Jurors: Suzan Rezac & Kelly Malec-Kosak

Exhibition Dates: May 18 – May 28, 2006

Reception: May 22, 4:00 – 8:00PM

Gahlberg Gallery - College of DuPage

McAninch Art Center 100, 425 Fawell Blvd., Glen Ellyn, IL 60187 / 630-942-2068

(From Chicago: take the Metra train towards Geneva to Glen Ellyn and then a PACE bus to the College of DuPage - gallery is about 2 miles south of the bus station)



Sobocienski



Karash

* Production Jewelry: Color and Mixed Media

An invitational show featuring jewelry notable for its innovative use of color and alternative materials. The media include polymer clay, glass beads, pigmented resin, wood, paper, and found objects, as well as metals such as sterling silver, copper, patinated brass, and anodized aluminum. Artists include Deb Karash, Tina Fung Holder, Mary Kanda, Elise Winters, Laurie Shovers, Lulu Smith, Laura Timmins, Tana Acton, Michele Friedman, Carol Windsor, Chickenscratch, Bijou Graphique and Mio Studio.

Curated by Peter Vale.

Exhibition Dates: April 28 - June 3, 2006

Reception: May 26, 5 – 9:00PM

Vale Craft Gallery

230 W. Superior, Chicago, IL 60610 / 312-337-3525 / www.valecraftgallery.com

(Brown line elevated train to Chicago stop, or #66 Chicago Ave bus to Franklin St. - 8 blocks west of Michigan Ave.)

*Reinterpreting the Vessel

A juried exhibition interpreting the vessel in metal as a functional or nonfunctional object.

Jurors:

Karen Johnson Boyd

Frank Paluch

Bruce Pepich



Reilly

(continued. . .)

Reinterpreting the Vessel *(continued from previous page)*

Exhibition Dates: April 21 – May 30, 2006

Reception: May 26, 5 – 7:30PM

Perimeter Gallery

210 W. Superior St, Chicago, IL / 312-266-9473

(Take the Brown line to the Chicago Stop. Walk one block from the stations main exit south on Franklin St. Make a left on Superior St and walk ¾ of a block. Perimeter Gallery is located on the left side of the street on the first floor.)

E
X
H
I
B
I
T
I
O
N
S



Mathes

Shelter Me

Lillstreet is pleased to present its first juried metalsmithing exhibition. The definitions for “Shelter Me” are works in metal that evoke shelter, from the architectural to the emotional to the metaphysical.

Jurors: Bruce Robbins, Nancy Deal, Peter Exley

Exhibition Dates: May 6 – June 17, 2006

Lillstreet Art Center Gallery

4401 N. Ravenswood, Chicago, IL 60640 / 773-769-4226

*** “Thoughts Materialized” - SNAG Annual Juried Student Exhibition**

Sponsored by Kerr Lab

The SNAG Annual Juried Student Exhibition is an international showcase of the best student work from college and university metalsmithing and jewelry programs across North America.

Jurors: Gail M. Brown, Yevgeniya Kaganovich and Kee-Ho Yuen

Exhibition Dates: May 24, 2006 – TBA

Reception: May 26, 5 – 9:30PM

Mars Gallery

1139 W. Fulton Market, Chicago, IL 60607 / 312-226-7808 / www.marsgallery.com
(CTA Bus route: #65 Grand)

*** Wire Works**

Wire Works features the work of two Asian artists. Keysook Geum works in wire wrapped in paper, sculpted into dress forms, and JinDian Shi creates life-size stainless steel wire sculpture.

Exhibition Dates: May 25 – June 9, 2006

Reception: May 25, 5 – 8:00PM

Andrew Bae Gallery

300 W. Superior St., Chicago, IL 60610 / 312-355-8601

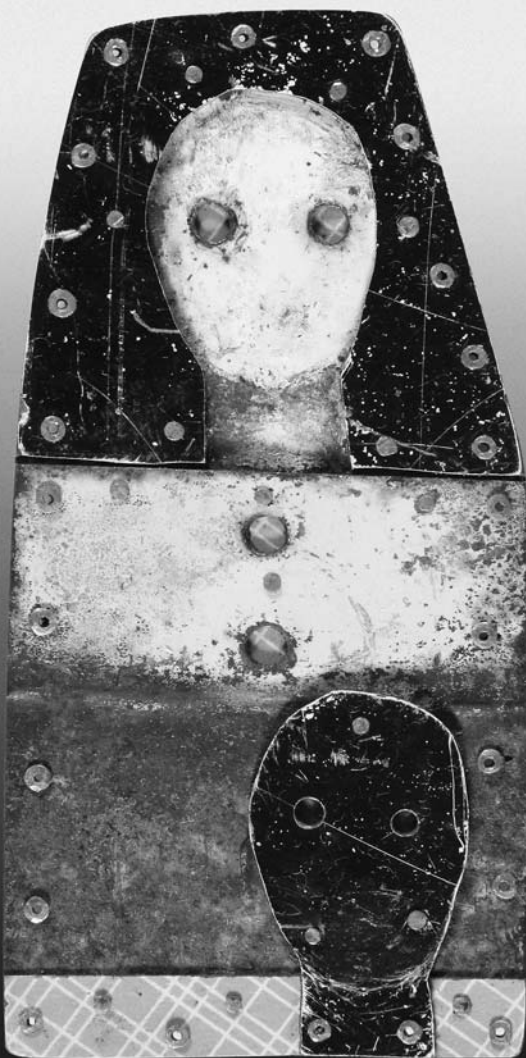


PHOTO: JOHN LENZ

SIGNS *of* LIFE

Judith Hoyt's work will appear in 'Signs of Life' 2006 – a jewelry art show and companion publication that joins the work of nine artists and nine writers in a celebration of jewelry and literary art.

Judith Hoyt
Eyes Only
Copper, found metals
3.5 x 1.75 x 0.25 in.

FACÈRÉ
JEWELRY ART GALLERY

1420 5th Ave., Seattle WA 98101
www.facerejewelryart.com | 206.624.6768

THANK YOU!

We would like to thank all of the volunteers and exhibition planners who generously gave their time and energy to the conference & exhibition planning and production.

(Volunteer names as available at the time of printing)

Committee Chairs and Coordinators:

Program Committee: Andy Cooperman, Don Friedlich,
Michele Friedman, Rebecka Sexton
Karla Wheeler - Logistics Chairperson
Carla Reiter - Exhibitions Chairperson
Rachelle Stromberg - Workshop Coordinator
Colin McDonald - Student Exhibition
Phil Carrizzi - Student Slide Show
Mike Stromberg - Volunteer Coordinator
Debbie Solomon - Gallery Night Coordinator
Sarah Chapman - Conference Tote Bag Coordinator
Brooke Marks Swanson - Room Share Coordinator
Melissa Manley & Sharon Massey - SNAG Auction Coordinators
Dan Connelly - SNAG Auction Local Coordinator
Kristen Holub - Photographic Documentation

Other Volunteers:

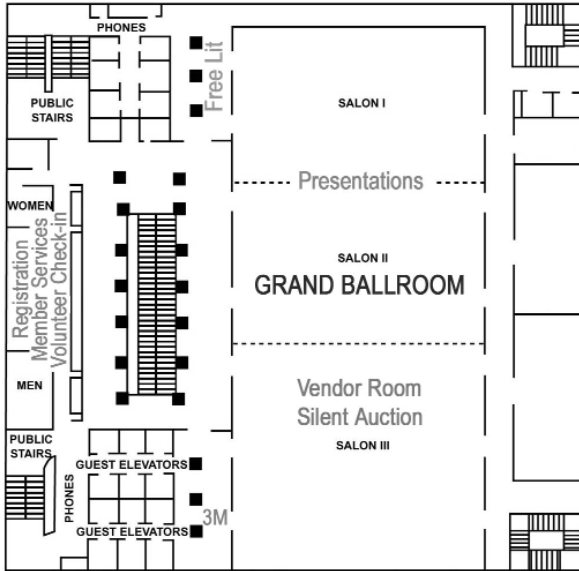
Whitney Abrams	Valerie Hector	Chris Ramsay
Mary Antonakos	Kathy Kamal	Carol Sakihara
Jill Apolinario	Mark Kanazawa	Biba Schutz
Eve Alfille	Deb Karash	Jane Shaffer
Ann Avery	Lanelle Keyes	Sue Shaffer
Marcy Babicz	Amber Liu	Lisa Sikorski
Jodi Barrios	Terri Logan	Lanny Silverman
Harriete Estel Berman	Karen Lorene	Christine Simpson
Katie Bernasek	Elaine Luther	Kiff Slemmons
Amy Butts	Natalie Macellaio	Peter Vale
Anna Cicirelli	Emily McCormick	Kiwon Wang
Jim Cohen	Tim McCreight	Mary Watson
Nancy Deal	Anne Mondro	Jane Weintraub
Darlys Ewoldt	Dennis Nahabetian	Ellen Wieske
Kathy Frey	Jo Nelson	David Williamson
Caroline Gore	Frank Paluch	Robertta Williamson
Bud Greene	Scott Patria	Sandie Zilker
Margie Green	Mary Pearse	
Karyn Haney	Leslie Perrino	

and the students at Lillstreet Art Center

Special thanks to Alix Mikesell, Pam Robinson, Peggy Eng, Melissa Huff, Shefali Kubavat, Kate Lichter, Tina Rinaldi, Kristin Shiga, and Dana Singer.

MARRIOTT CHICAGO DOWNTOWN MEETING ROOMS

7th Floor



5th Floor

